

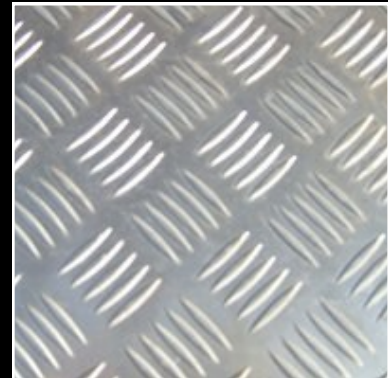
# Tread Plates



## Aluminium 5 Bar Tread Plate

(Checker plate)

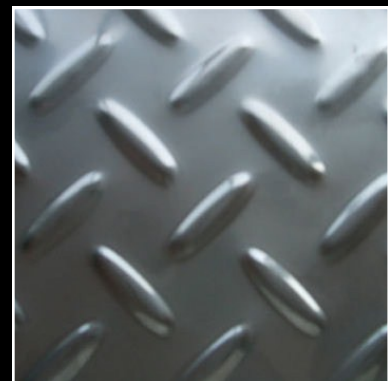
Grade	Gauge	Code
5754	2.0mm	5BAR20
5754	3.0mm	5BAR30
5754	4.5mm	5BAR45
5754	6.0mm	5BAR60



## Stainless Steel Tread Plate

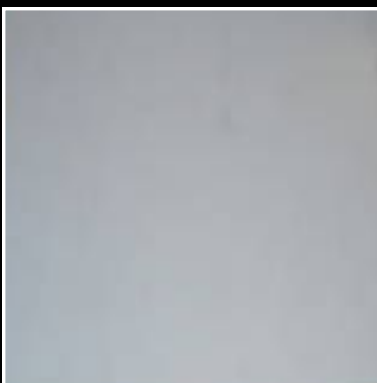
Grade	Gauge	£ Per Mtr
304	3.0mm	SSTP30
304	4.5mm	SSTP45
304	6.0mm	SSTP60

Quantities and sizes required to price



## Other

### Zintec



Gauge	£ Per Mtr
0.9mm	ZINT09
1.2mm	ZINT12
2.0mm	ZINT20

### Galvanised Steel



Gauge	£ Per Mtr
1.2mm	GALV12
2.0mm	GALV20
3.0mm	GALV30

### Copper C101



Gauge	£ Per Mtr
0.9mm	COP09
1.2mm	COP12
2.0mm	COP20